

# MARCH HARE tools

## Tools for Manipulating Painted Fields



If you have hard coded labels on your form components you know it's very difficult to 'globally replace' text (e.g.: 'id' for 'code' or a company name). And if you've ever thought of changing the name of a field in every screen, service and report! Or maybe you need to find all the places where your DropDownLists have a certain *value* or *representation* hardcoded in the Widget Properties? Then again, maybe you just want to compile all the forms with client\_id painted?

This tool allows you to report on these contents of the form paint tableau, and optionally update any of them, then compile all the matching forms. And what's more? You get complete source code!

**ToolKit  
Software  
from  
March Hare**

Uniface Consultants - Support - Tools

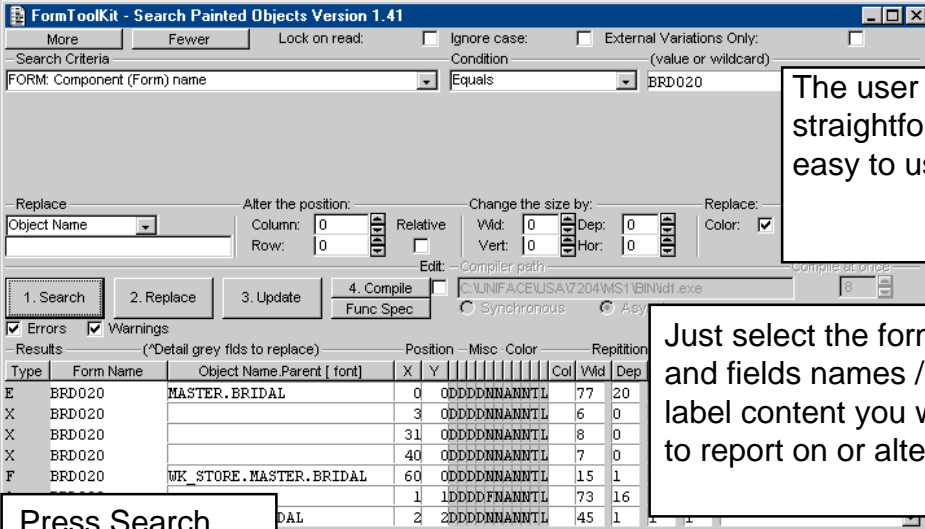
P.O. Box 265  
Church Point, NSW, 2105  
Australia

Head Office Ph: +61 2 9979 3788

consultants@march-hare.com  
http://march-hare.com

(C) Copyright 1998, 1999 March Hare Pty Ltd. All Rights Reserved.

March Hare tools are designed with maximum usefulness to a development environment in mind. Complete source code and documentation mean that the flexibility is as unlimited as your imagination.



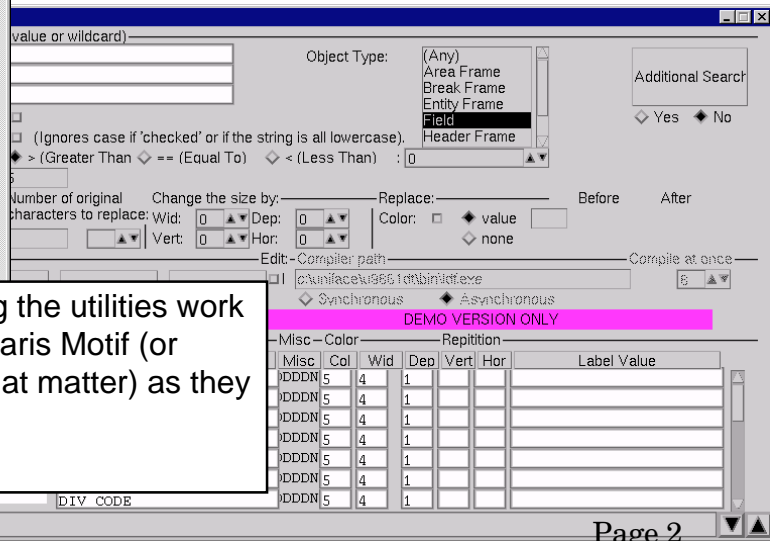
The user interface is straightforward and easy to use.

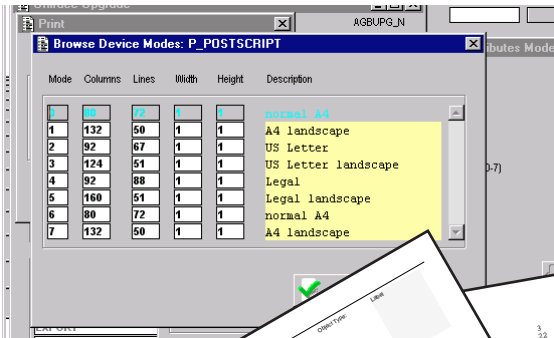
Just select the forms and fields names / label content you wish to report on or alter.

Press Search, Replace, Update then Compile.

of the replace function.  
If the user has searched by Object Name then the Replace drop down list defaults to Object Name. Likewise for Contents of Label searches, the drop down list will default to Label Value

Even with 3GL coding the utilities work just as well under Solaris Motif (or character mode for that matter) as they do under Windows

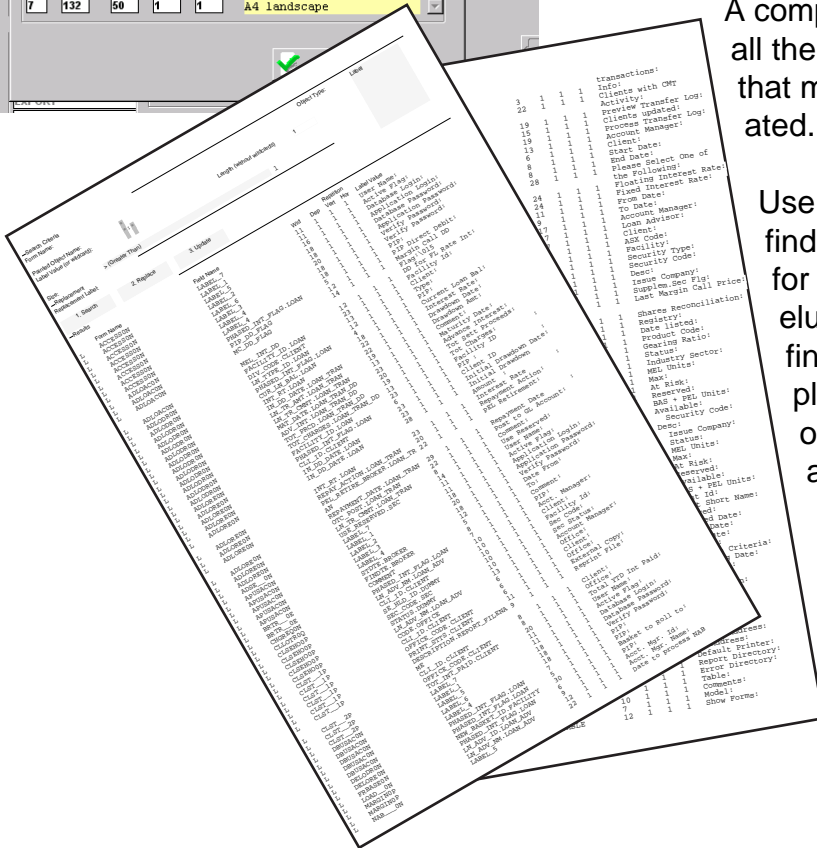


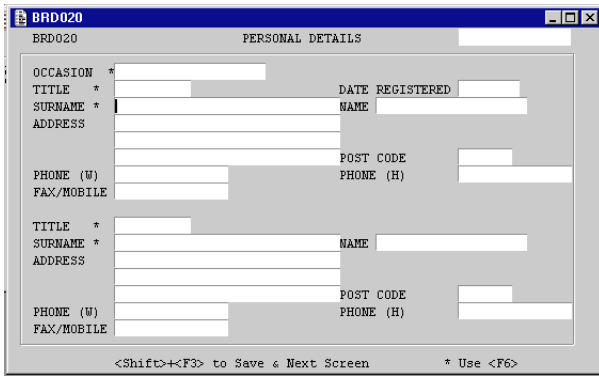


Set up the printer definition, it can be a postscript, laserjet or any one of the standard Uniface printers, sent via windows or direct to file or notepad etc.

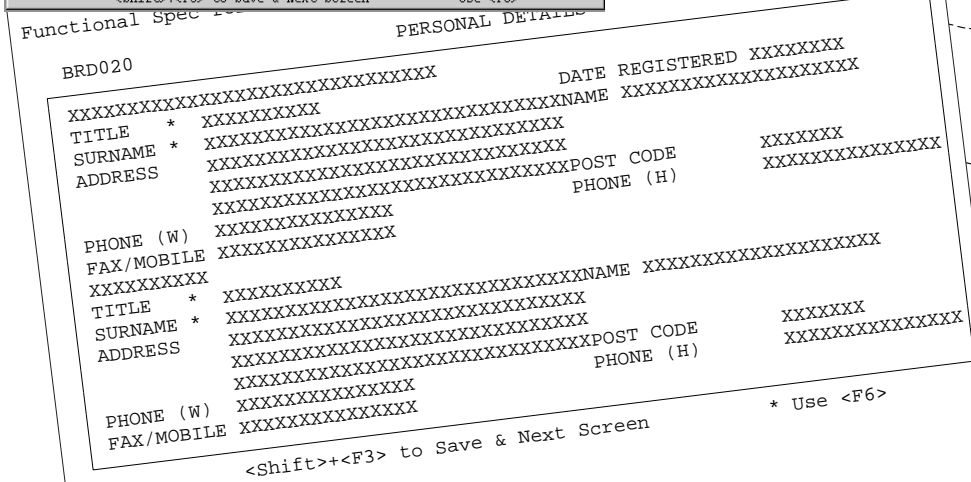
A comprehensive list of all the painted objects that match is generated.

Use the report for finding text in labels, for finding that elusive field, or finding all of the places that Header or Trailer frames are used.





And if you want a complete listing of a form, FormToolKit can provide that as well.



External schema name  
 Template name  
 External schema type  
 Hide Form stack  
 indicator  
 Form Title

Inheritance type  
 Movable  
 Blink N Bright N  
 Left 0 Width 0

The FormToolKit Functional Spec generator, gives you the things that the Uniface IDF proc listing doesn't, like a mini-picture of the screen, a full list of all fields, their placement and attributes. Everything there is to know about a form, it'll tell you.